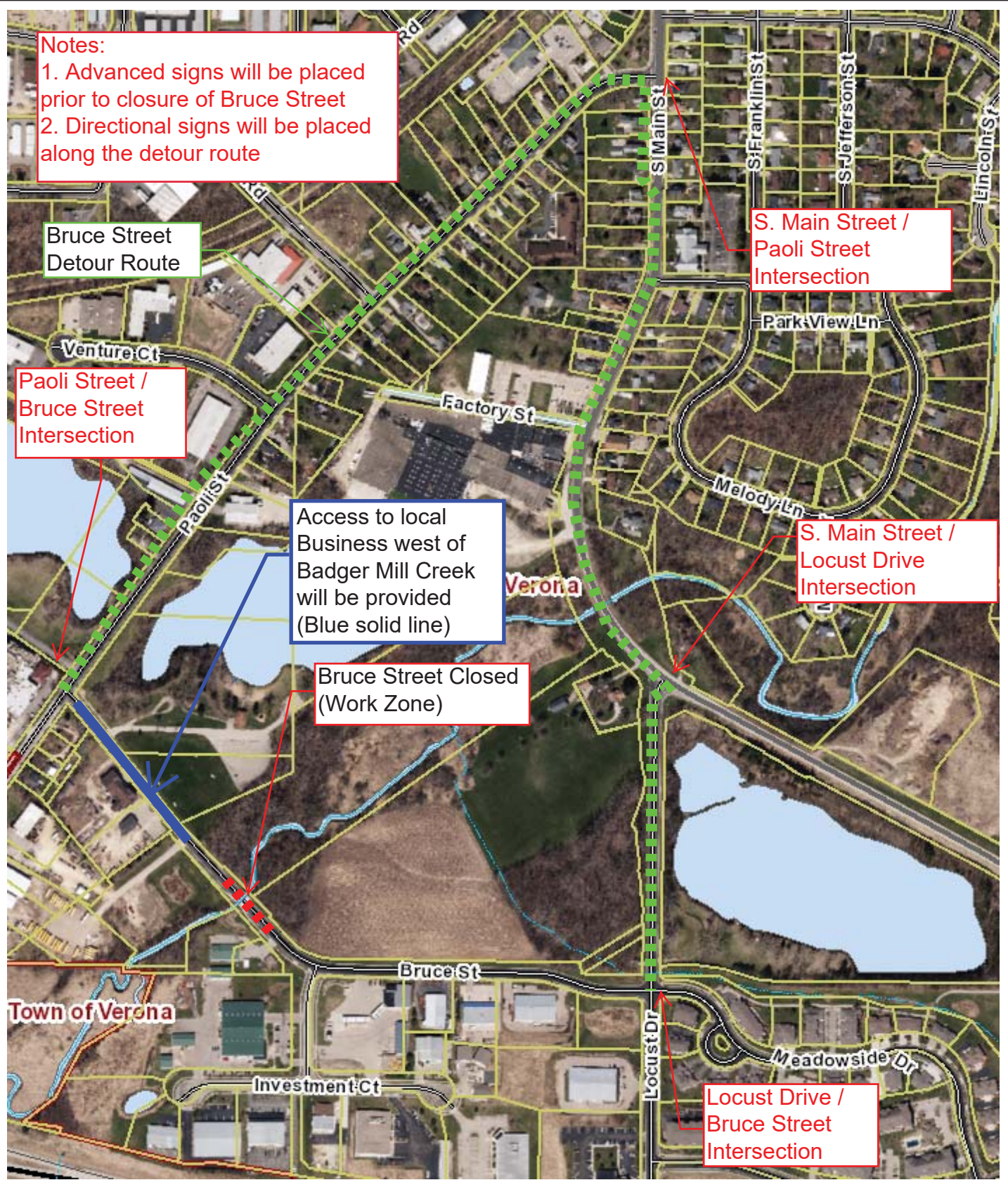


Notes:

- 1. Advanced signs will be placed prior to closure of Bruce Street
- 2. Directional signs will be placed along the detour route



Bruce Street Detour
2018-108, ESI Project

DISCLAIMER: The City of Verona does not guarantee the accuracy of the material contained here in and is not responsible for any misuse or misrepresentation of this information or its derivatives.



City of Verona
111 Lincoln St
Verona, WI 53593
(608) 845 - 6495

SCALE: 1" = 500'

Print Date: 9/23/2020